

LSWEngineers
 LSW Engineers Arizona, Inc.
 2333 W. Northern Ave., Ste. 9 Phoenix, AZ 85021
 Office: (602) 249-1320 www.lswengineers.com
 Project No. 2021-193.000



PLACER COUNTY - RFP NO. 20035-II
SB863 & SB844
11801 GO FOR BROKE ROAD, ROSEVILLE, CA 95678

NOT FOR CONSTRUCTION
 REVIEW SET
 THIS DOCUMENT IS PRELIMINARY IN NATURE AND IS NOT A FINAL, SIGNED AND SEALED DOCUMENT
 REVIEW SET
 NOT FOR CONSTRUCTION

Arrington Watkins Architects
 5240 North 16th Street, Suite 101
 Phoenix, Arizona 85016
 Telephone: (602) 279-4373
 Fax: (602) 279-9110
 www.awarch.com
 A Limited Liability Company
 © Copyright 2022

PROJECT NO.: _____
 DATE: _____
 DESIGNED BY: _____
 DRAWN BY: _____
 APPROVED BY: _____
 OWNER: _____

BUILDING NAME
ELECTRICAL
SITE LIGHTING PLAN

SHEET NUMBER: **17 OF 21**

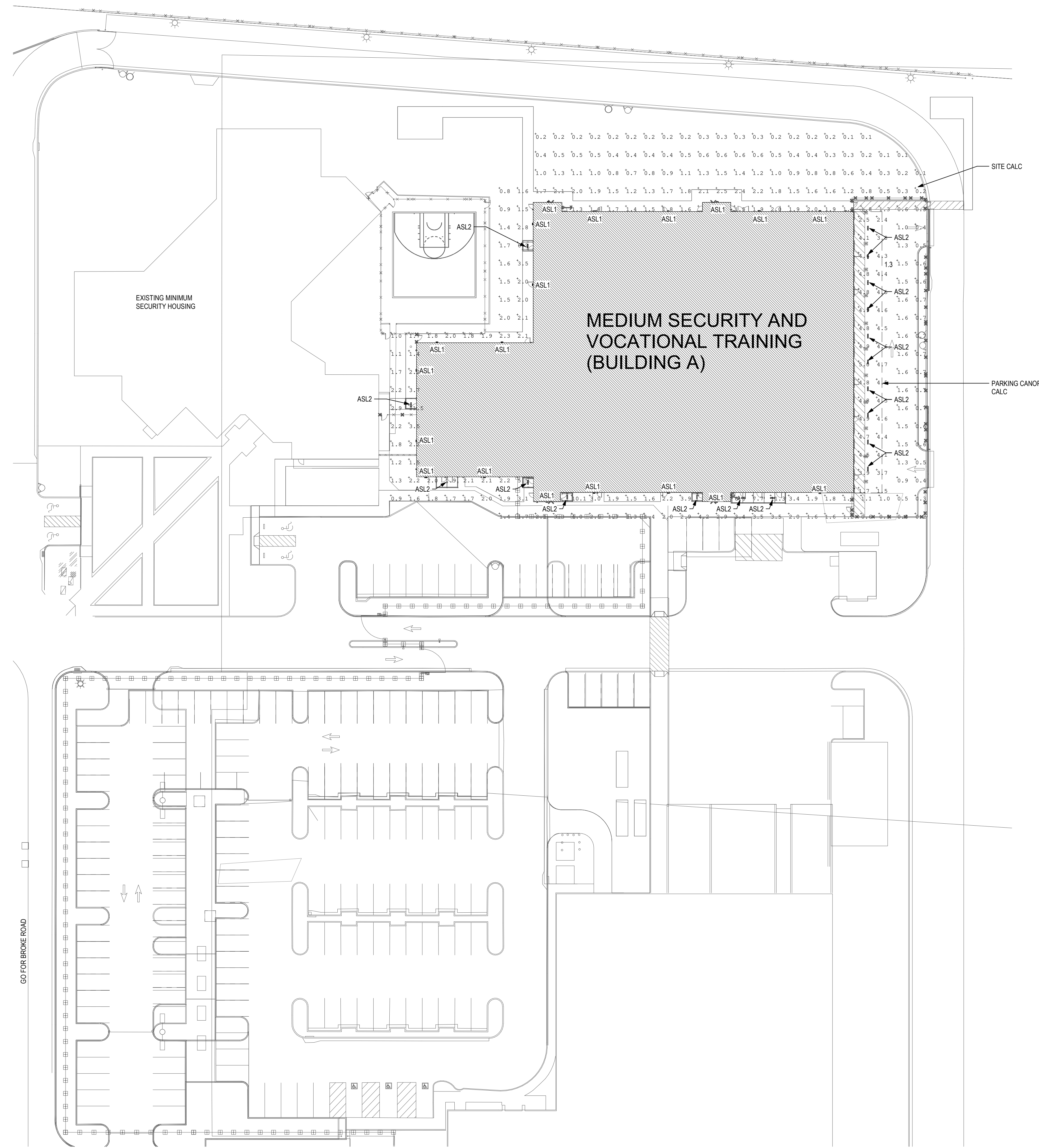
Agency Tracking Number

PRELIMINARY NOT FOR CONSTRUCTION

RESERVED FOR STATE FIRE MARSHAL

Symbol	Qty	Label	Arrangement	Lum. Lumens	LLF	(MANUFAC)	Description	BUG Rating
□	19	ASL1	SINGLE	2655	1.000	WILLIAMS OUTDOOR	WPH4.30-745-TFT-xxx-SOGL-DIM-UNV	B1-U0-G1
□	17	ASL2	SINGLE	2201	1.000	WILLIAMS INDOOR	96-2-L21-840-HA-FR-DIM-UNV	B1-U3-G1

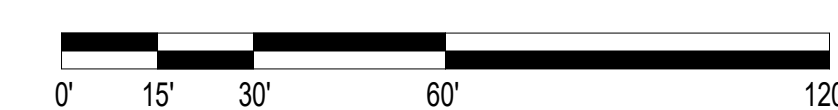
Label	CalcType	Units	Avg	Max	Min	Avg/Min	Max/Min
Parking Canopy	Illuminance	Fc	4.21	5.0	1.5	2.81	3.33
Site Calc. MSVTF	Illuminance	Fc	1.61	12.2	0.1	16.10	122.00



1

ELECTRICAL PARTIAL SITE PLAN - PHOTOMETRICS

1" = 30'-0"



700 Alhambra Blvd.
Sacramento, California 95816
Main: (916) 234-3731
Fax: (916) 279-9110

© Copyright 2022

SB844
COUNTY OF PLACER
MEDIUM SECURITY & VOCATIONAL TRAINING
11801 GO FOR BROKE ROAD, ROSEVILLE, CA 95678
California State Fire Marshal Permit # 22-N-2760-CP-DR

NO.	REVISION	DATE

PROJECT NO.: 2022_042
DATE: 08/12/2022
DESIGNED BY: MLL
DRAWN BY: MLL
APPROVED BY: MDR
SHEET TITLE:
ELECTRICAL
PARTIAL SITE PLAN - A -
PHOTOMETRICS

SHEET NUMBER:
18 OF 21

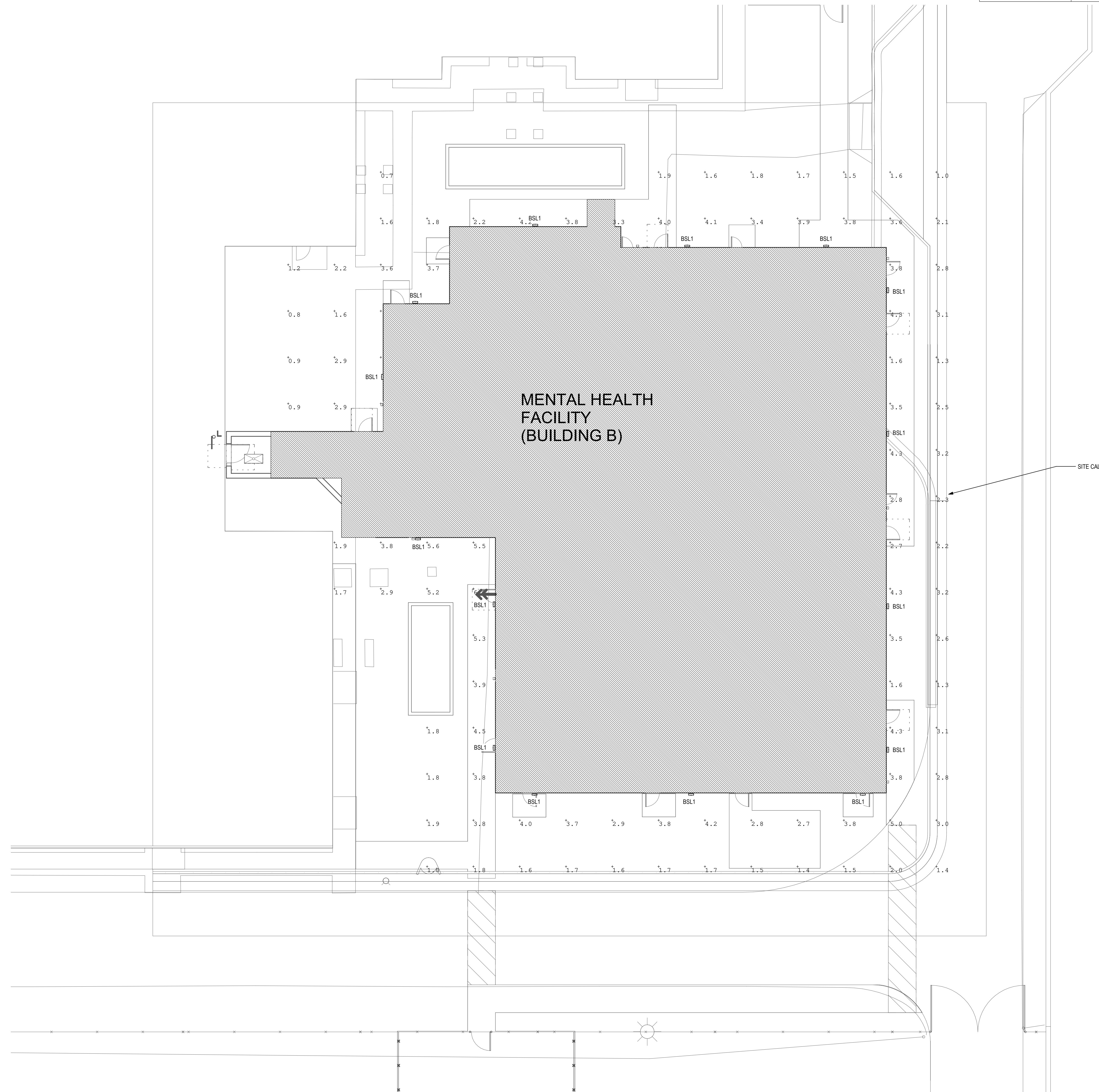


PRELIMINARY NOT FOR CONSTRUCTION

RESERVED FOR STATE FIRE MARSHAL

Symbol	Qty	Label	Arrangement	Lum. Lumens	LLF	[MANUFAC]	Description	BUG Rating
⌈	15	BSL1	SINGLE	3106	1.000	WILLIAMS OUTDOOR	VWPH-L30-740-T3-xxx-SDGL-DIM-UNV	B1-UG-G1

Label	CalcType	Units	Avg	Max	Min	AvgMin	MaxMin
Parking Canopy	Illuminance	Fc	0.00	0.0	0.0	N.A.	N.A.
Site Calc. MHF	Illuminance	Fc	2.81	6.5	0.7	4.01	9.29
Site Calc. MSVTF	Illuminance	Fc	0.00	0.0	0.0	N.A.	N.A.



700 Alhambra Blvd.
 Sacramento, California 95816
 Main: (916) 234-3731
 Fax: (916) 279-9110
 © Copyright 2022

SB863
 COUNTY OF PLACER
 MENTAL HEALTH FACILITY
 11801 GO FOR BROKE ROAD, ROSEVILLE, CA 95678
 California State Fire Marshal Permit # 22-N-2744-CP-DR

NO.	REVISION	DATE

PROJECT NO.: 2022_042
 DATE: 08/12/2022
 DESIGNED BY: MLL
 DRAWN BY: MLL
 APPROVED BY: MDR
 SHEET TITLE:
 ELECTRICAL
 PARTIAL SITE PLAN - B -
 PHOTOMETRICS

SHEET NUMBER:
 19 OF 21

9/8/2022 10:47:12 AM Autodesk Docs\Placer County MHF & MSV\12118-MEP22-CENTRAL.rvt

1 ELECTRICAL PARTIAL SITE PLAN - B - PHOTOMETRICS
 1" = 10'-0"

